



Mekong River Commission

**Weekly Wet Season Situation Report
in the Lower Mekong River Basin
16 – 22 June 2026**

Prepared by
The Regional Flood and Drought Management Centre
22 June 2026

The MRC is funded by contributions from its Member Countries and Development Partners, including Australia, Belgium, the European Union, Finland, France, Germany, Japan, Luxembourg, the Netherlands, Sweden, Switzerland, the United States and the World Bank.

Copyright © Mekong River Commission, 2026

First published (2020)

Some rights reserved.

This work is the product of the Mekong River Commission Secretariat. While all efforts are made to present accurate information, the Secretariat does not guarantee the accuracy of the data included in this work. The boundaries, colours, denomination, and other information shown on any map in this work do not imply any judgement on the part of the MRC concerning the legal status of any territory or the endorsement or acceptance of such boundaries.

Nothing herein shall constitute or be considered to be a limitation upon or waiver of the privileges and immunities of the MRC, all of which are specifically reserved.

This publication may be reproduced in whole or in part and in any form for educational or non-profit purposes without special permission from the copyright holder, provided acknowledgement of the source is made and notification is sent to the MRC. The MRC would appreciate receiving a copy of any publication that uses this publication as a source. This publication cannot be used for sale or for any other commercial purpose whatsoever without permission in writing from the MRC.

Title: Weekly wet season situation report in the Lower Mekong River Basin for 16 – 22 June 2026.

ISSN: 1728-3248

Keywords: Monitoring/forecasting/weather/the Mekong/the Tonle Sap Lake

For bibliographic purposes, this volume may be cited as:

Mekong River Commission. (2024). *Weekly wet season situation report in the Lower Mekong River Basin for 16 – 22 June 2026*. Vientiane: MRC Secretariat.

Information on MRC publications and digital products can be found at

<http://www.mrcmekong.org/publications/>

All queries on rights and licenses should be addressed to:

Mekong River Commission

Documentation and Learning Centre

184 Fa Ngoum Road, Unit 18, Ban Sithane Neua, Sikhottabong District, Vientiane 01000, Lao PDR

Telephone: +856-21 263 263 | E-mail: mrcs@mrcmekong.org | www.mrcmekong.org

Content

- Content i
- List of Figures..... ii
- List of Tables..... iii
- Key Messagesiv
- 1 Introduction 22
- 2 General Weather Patterns 23
- 3. Rainfall and Water Level Monitoring 24
 - 3.1. *Rainfall monitoring* 24
 - 3.2. *Water level monitoring* 26
- 4. Flash Flood in the Lower Mekong Basin 30
- 5. Drought Monitoring in the Lower Mekong Basin..... 31
 - 5.2. *Weekly drought monitoring from 16 - 22 June 2026*..... 31
- 6 Weather and Water Level Forecast and Flash Flood information 34
 - 6.1 *Rainfall forecast*..... 34
 - 6.2 *Water level forecast* 36
 - 6.3 *Flash Flood Information*..... 39
 - 6.4 *Drought forecast*..... 39
- 7 Summary and Possible Implications 39
 - 7.1. *Rainfall and its forecast*..... 39
 - 7.2. *Water level and its forecast*..... 40
 - 7.3. *Flash flood and its trends*..... 40
 - 7.4. *Drought condition and its forecast*..... 40
- Annex A: Weekly water level monitoring at 22 key stations..... 41
- Annex B: Tables for weekly updated water levels and rainfall at the Key Stations..... 25
- Annex C: Performance of the weekly flood forecasting..... 29

List of Figures

- Figure 1: Weather conditions over the LMB..... 23
- Figure 2: Outlook of wet and dry conditions over the Asian countries by ASMC..... 24
- Figure 3: Tropical storm observed on 22 June 2026..... 24
- Figure 4: Weekly rainfall distribution over the LMB during 16 – 22 June 2026 25
- Figure 5: The key stations along LMB for river flood forecasting 27
- Figure 6. Water level at the Jinghong hydrological station up to 22 June 2026. 28
- Figure 7: Total accumulated reverse flow to Tonle Sap Lake updated on 22 June 2026..... 29
- Figure 8: Seasonal change of inflows and outflows of Tonle Sap Lake. 29
- Figure 9. The seasonal change in monthly flow volume of Tonle Sap Lake. 30
- Figure 10. Flash Flood Guidance for the next 1-hr, 3-hr and 6-hr on 17 June..... 31
- Figure 11: Weekly standardized precipitation index from 16 - 22 June..... 32
- Figure 12: Weekly Index of Soil Water Fraction from 16 - 22 June. 33
- Figure 13: Weekly Combined Drought Index from 16 - 22 June 34
- Figure 14: Accumulated rainfall forecast from CHIRPS-GFS (23 – 27 June 2026)..... 35

List of Tables

Table 1. The monthly change in the flow volume of Tonle Sap Lake. 30

Table 2. Detected flash flood in the LMB on 17 June 2026 31

Table 3. River Monitoring and Forecasting Bulletin..... 37

Key Messages

Key messages for this weekly report are presented below.

Rainfall monitoring and forecast

- From 16 - 22 June, light to moderate rainfall is forecast in some areas in the LMB, with localized heavy rainfall events anticipated in some areas, especially in the northern and central part of Lao PDR.
- Next week, from 23 - 29 June, light to moderate rainfall is forecast in some areas in the LMB, with localized heavy rainfall events anticipated in some areas, especially in the northern and central part of Lao PDR, and the 3S basin.

Water level monitoring and forecast

- At 22 key monitoring stations along the Mekong mainstream from 16 – 22 June 2026, water levels at all stations along the Mekong mainstream are in normal conditions. The total accumulated reverse flow to TSL is 00.00 Km³. However, the 6 monitoring stations remain in normal condition with respect to the flow threshold (PMFM Thresholds). It is also the same condition for Tan Chau and Chau Doc monitoring stations, which are significantly influenced by sea tidal fluctuation.
- In the period of 23 – 27 June 2026, water levels at almost stations along the Mekong mainstream are expected to drop except for Chiang, Luang Prabang stations, Chiang Khan, and those from Phnom Penh (Bassac) to Koh Khel. Water levels at Tan Chau and Chau Doc are expected to be fluctuated due to tidal fluctuations.

Drought condition and forecast

- From 16 - 22 June, according to the Combined Drought Indicator (CDI), no significant drought conditions were observed across the majority of the Lower Mekong Basin (LMB). However, localized drought conditions persisted in some areas in the northeastern part of Thailand, and lower part of Cambodia.
- The weekly forecast from 23 - 29 June 2026 indicates that no drought conditions are expected across the Lower Mekong Basin (LMB), except some areas in the northeastern part of Thailand and Cambodia during the coming week based on the Combined Drought Index.

1 Introduction

This Weekly Wet Season Situation Report presents a preliminary analysis of the weekly hydrological situation in the Lower Mekong River Basin (LMB) for **16 – 22 June 2026**. The trend and outlook for water levels are also presented.

This analysis is based on the daily hydro-meteorological data provided by the Mekong River Commission (MRC) Member Countries – Cambodia, Lao PDR, Thailand, and Viet Nam – and on satellite data. The water level indicated in this report refers to an above zero gauge of each station.

The report covers the following topics that are updated weekly:

- General weather patterns, including rainfall patterns over the LMB.
- Water levels in the LMB, including in the Tonle Sap Lake.
- Flash flood and drought situation in the LMB.
- Weather, water level and flash flood forecast, and
- Possible implications.

Mekong River water levels are updated daily and can be accessed from:

<http://ffw.mrcmekong.org/bulletin.php>.

Drought monitoring and forecasting information is available at:

<http://droughtforecast.mrcmekong.org>

Flash flood information is accessible at: <http://ffp.mrcmekong.org:8000/bulletin/>

2 General Weather Patterns

Next week (23 to 29 June 2026), the moderate southwest monsoon prevails over the lower part of the LMB while the low-pressure cell over upper part. Light to moderate rainfall is forecast in some areas in the LMB, with localized heavy rainfall events anticipated in some areas, especially in the northern and central part of Lao PDR, and the 3S basin.

Figure 1 presents mean sea level pressure over the region

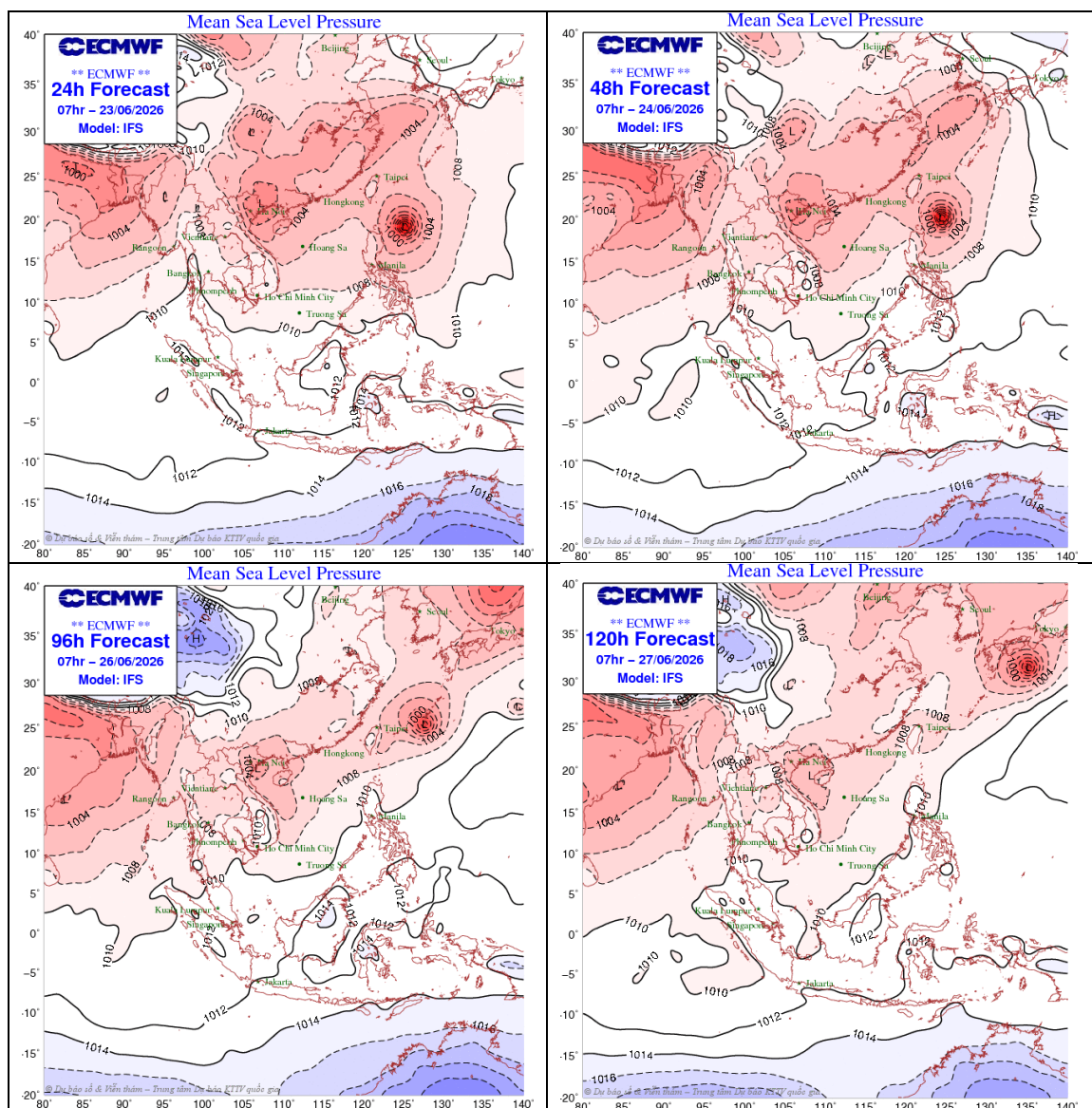


Figure 1: Weather conditions over the LMB

According to the ASEAN Specialised Meteorological Centre (ASMC, <http://asmc.asean.org/home/>), the sub seasonal weather outlook (22 June – 05 July 2026) indicates that Warmer than usual temperatures are predicted over most of the LMB in the next fortnight (22 June – 5 July), while wetter conditions are predicted over parts of the LMB in Week 2 (29 June – 5 July). **Figure 2** shows the outlook of weather condition from 22 June to 05 July 2026 in Southeast Asia based on results from the NCEP model (National Centres for Environmental Prediction).

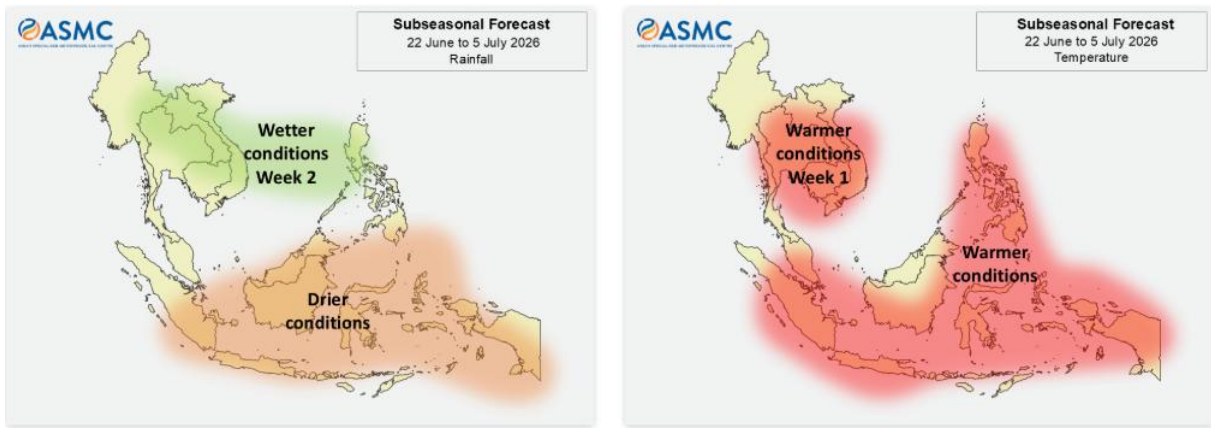


Figure 2: Outlook of wet and dry conditions over the Asian countries by ASMC.

Based on the tropical storm (https://www.jma.go.jp/bosai/weather_map/#lang=en), there is one active tropical storm namely Mekkhala in the western north pacific. However, it may not significantly affect the LMB (Figure 3).

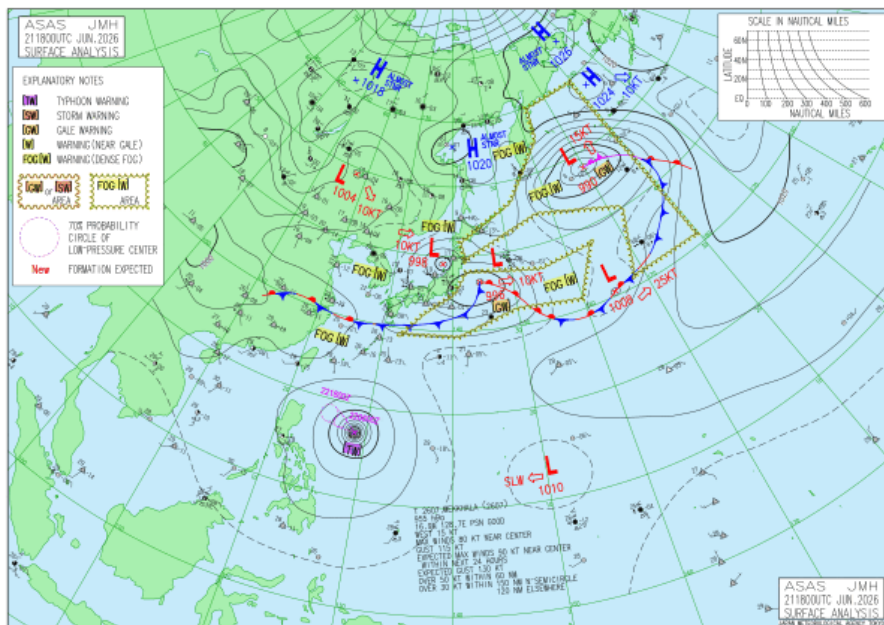


Figure 3: Tropical storm observed on 22 June 2026

3. Rainfall and Water Level Monitoring

3.1. Rainfall monitoring

The weekly accumulated rainfall based on the observed data provided by the MRC Member Countries – Cambodia, Lao PDR, Thailand, and Viet Nam – from 16 – 22 June (Figure 4). Isolated thunderstorm and moderate to heavy rain occurred in the northern and central part of Lao PDR, Cambodia, the Mekong delta, and the 3S basin.

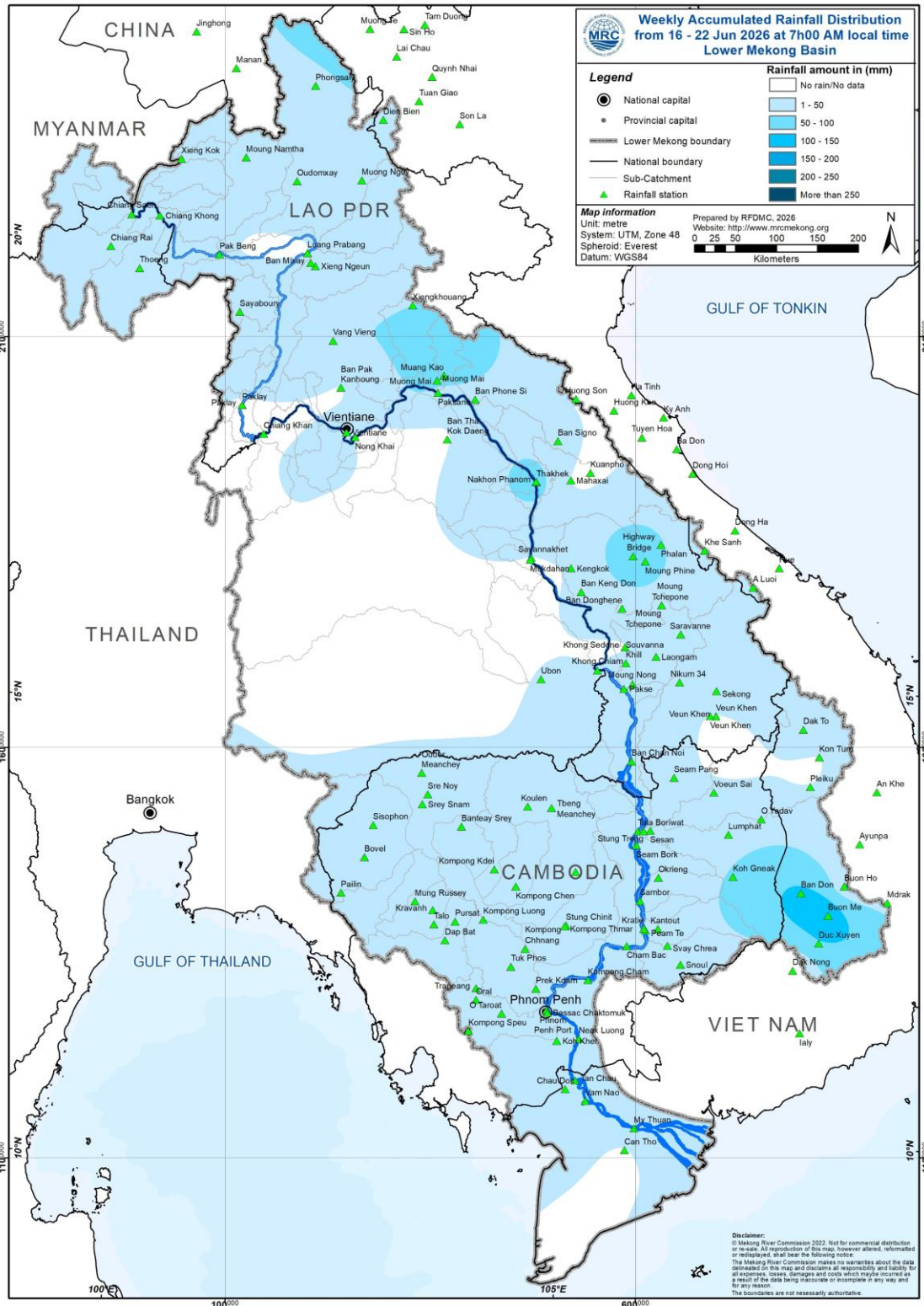


Figure 4: Weekly rainfall distribution over the LMB during 16 – 22 June 2026

3.2. Water level monitoring

The hydrological regimes of the Mekong mainstream are illustrated by recorded water levels and flows at key mainstream stations: at Chiang Saen to capture mainstream flows entering from the Upper Mekong Basin (UMB); at Vientiane to present flows generated by climate conditions in the upper part of the LMB; at Pakse to investigate flows influenced by inflows from the larger Mekong tributaries; at Kratie in Cambodia to capture overall flows of the Mekong Basin; and at Viet Nam's Tan Chau and Chau Doc to monitor flows to the Delta.

The key stations along the LMB and their respective model application for River Flood Forecasting during the wet season from June to October and River Monitoring during the dry season from November to May are presented in **Figure 5**. The hydrograph for each key station is available from the MRC's River Flood Forecasting: <http://ffw.mrcmekong.org/overview.php>.

During 16 – 22 June 2026, the observed water level (WL) at Jinghong hydrological station¹, was almost constant and ranges between 537.31 and 536.73 m, which are corresponding to the outflow between 2,420.00 m³/s to 1,930.00 m³/s (recorded on 7:00 am), respectively (**Figure 6**). The water level in Chiang Saen Station also indicated a slight fluctuation ranging from 4.33 m to 3.05 m. At the same period, the water level in Luang Prabang Station also decreased with an approximate value of -0.78 m from 10.53 m to 9.75 m as compared to the previous week. In addition, at Chiang Khan, the water level has decreased from 7.40 m to 6.32 m.

The water levels at Vientiane, Nongkhai, Paksane, Nakhon Phanom, Thakhek, Mukdahan, and Savannakhet stations have decreased from 5.57 m to 4.58 m, 4.73 m to 3.52 m, 5.69 m to 5.12 m, 4.47 m to 4.16 m, 5.74 m to 5.43 m, 4.60 m to 4.22 m, and 2.85 m to 2.62 m, respectively. At Khong Chiam and Pakse, the water levels have been stable as compared to the previous week.

Water levels at Stung Treng, Kratie, Kompng Cham, Phnom Penh (Bassac), Phnom Penh Port, Koh Khel and Neak Luong stations also have increased from 3.78 m to 3.90 m, 9.30 m to 9.84 m, 3.78 m to 4.38 m, 2.05 m to 2.36 m, 1.05 m to 1.35 m, 2.03 m to 2.18 m, 1.12 m to 1.58 m, and 1.14 m to 1.63 m, respectively.

Similar to the previous week, the water levels from 16 to 22 June 2026 at Viet Nam's Tan Chau and Chau Doc fluctuated between their LTA values due to daily tidal effects from the sea. At the Tan Chau station, the water levels varied between 0.93 m and -0.07 m, while at the Chau Doc station, they ranged between 1.11 m and -0.04 m.

¹ Near-real time data of hydro-meteorological monitoring at the Jinghong hydrological station is available at <https://portal.mrcmekong.org/monitoring/river-monitoring-telemetry>.

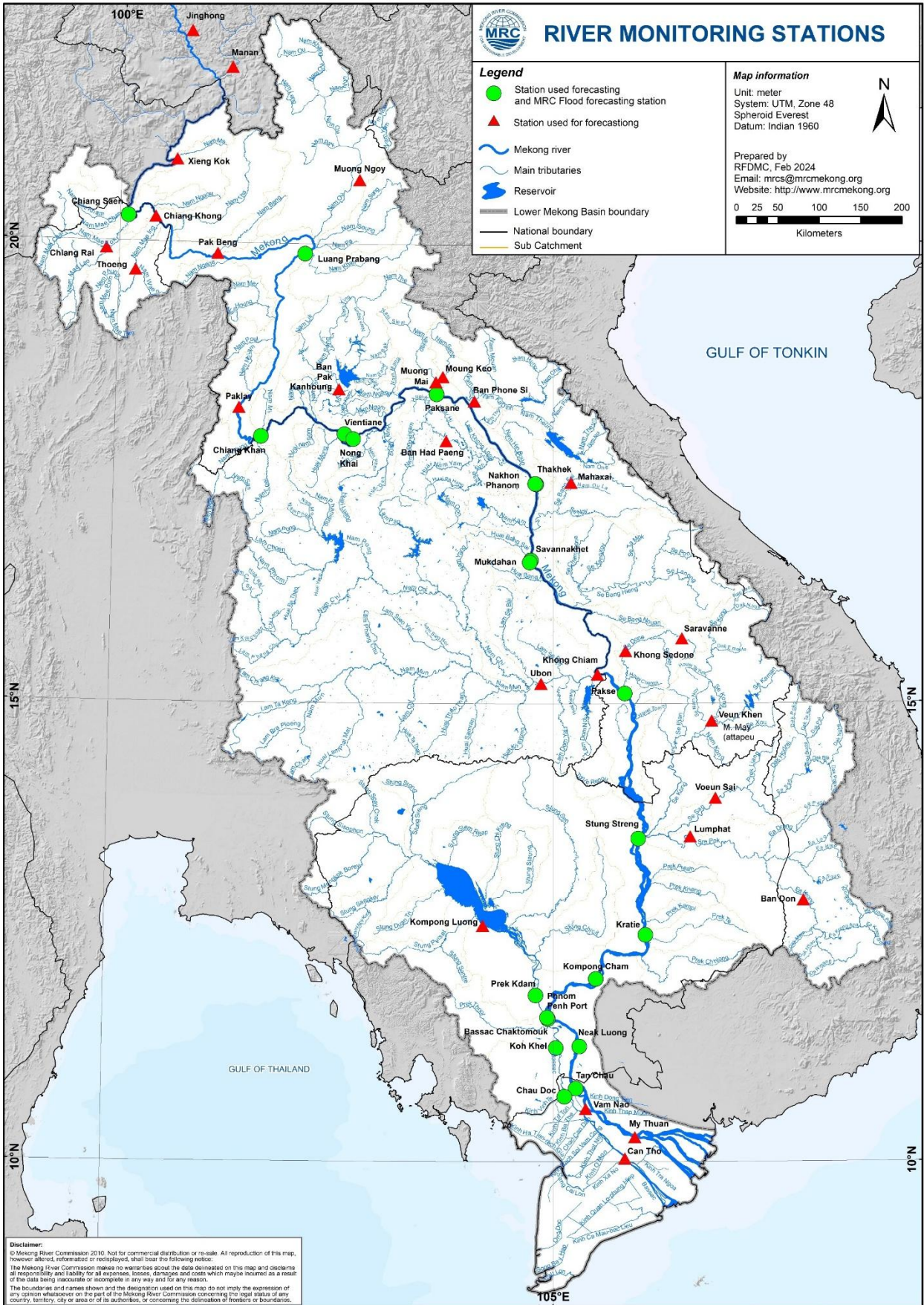


Figure 5: The key stations along LMB for river flood forecasting

The water levels in key monitoring stations on **22 June 2026** are in normal conditions, which have not reached alarm or flood levels. Moreover, all stations with available PMFM thresholds are in normal conditions. The graphics of water level monitoring in all key stations are presented in **Annex A** and the weekly water levels and rainfall at each key station are summarised in **Annex B**.

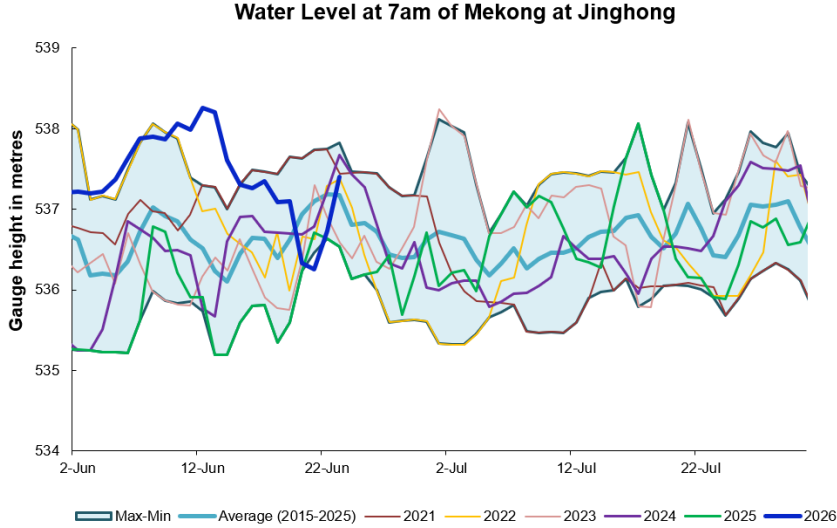


Figure 6. Water level at the Jinghong hydrological station up to 22 June 2026.

At the end of the wet season, when water levels along the Mekong River subside, the outflow of the Tonle Sap Lake (TSL) returns to the Mekong River and then to the Delta. This phenomenon normally takes place between September and October. Based on flow observation at Prek Kdam monitoring station updated on **22 June 2026**, the inflow (reverse flow) of the Tonle Sap Lake has not yet taken place.

The inflow flow is calculated based on a formula of rating-curves using by difference of water levels at Kompong Luong and Phnom Penh Port stations for slope and Prek Kdam as cross-section of the Lake. The formula of flow is as follows:

$$Flow = WL_{Prek\ Kdam}^{1.2} \times \sqrt{|WL_{Phnom\ Penh\ Port} - WL_{Kompong\ Luong}|}$$

Where, WL is water level in m (msl).

The current total accumulated reverse flow to the lake is **00.00 Km³** (**Figure 7**). The seasonal changes of the inflow/reverse flow and the outflow of the TSL at Prek Kdam in comparison with the flows of 2020, 2021 and 2022, 2023 and their LTA level (1996-2025) are illustrated in **Figure 8**. Up to **22 June 2026**, it was observed that the water is still moving out of the Tonle Sap Lake (**Figure 8**).

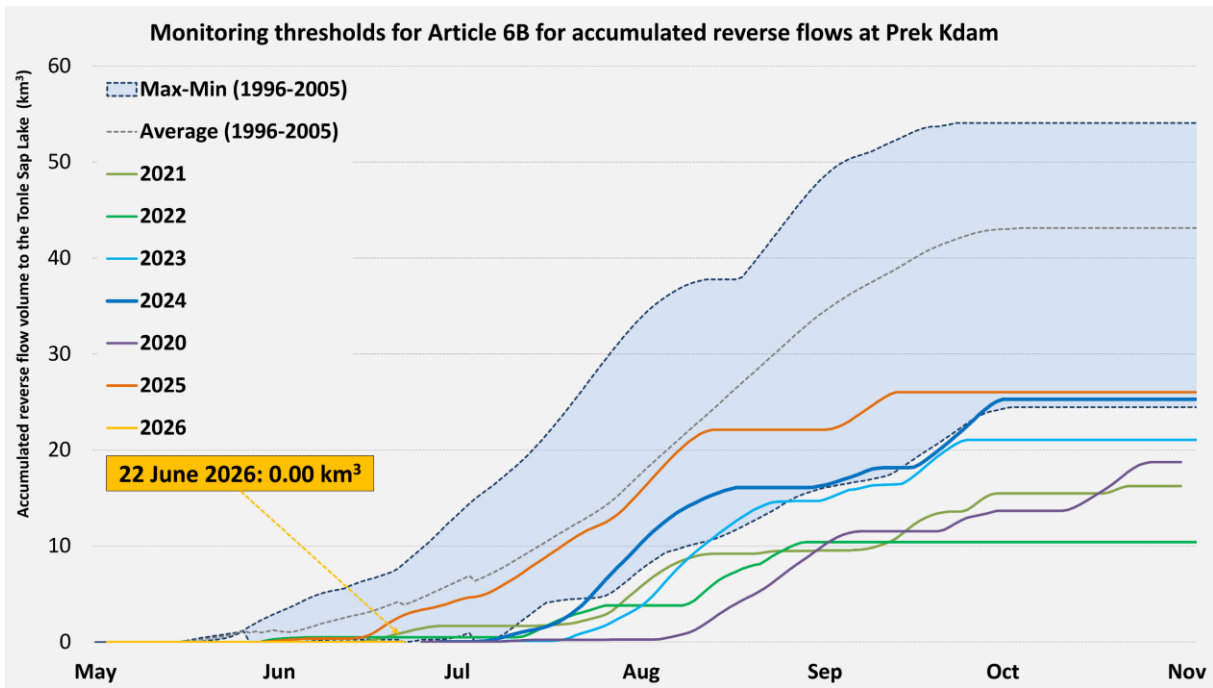


Figure 7: Total accumulated reverse flow to Tonle Sap Lake updated on 22 June 2026.

The seasonal changes in monthly flow volumes up to **22 June 2026** for the TSL compared with that in 2020, 2021, 2022, 2023, 2024 and their LTAs, and the fluctuation levels (1996–2025) are presented in **Table 8**. The mean monthly water volume of the Tonle Sap Lake in May 2026 is lower than its LTA (about 90.51 %) and higher than almost recent years from 2020 except for 2022 during the same period (**Figure 9 and Table 1**).

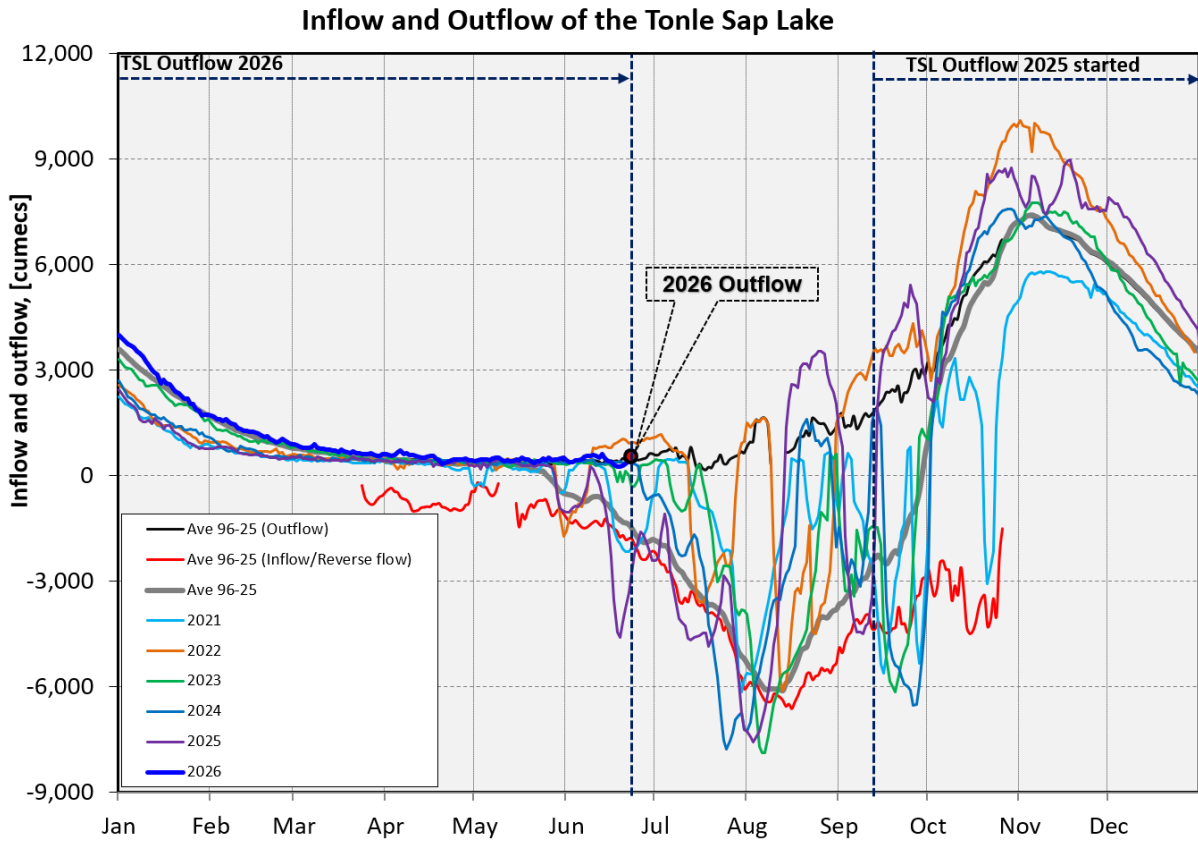


Figure 8: Seasonal change of inflows and outflows of Tonle Sap Lake.

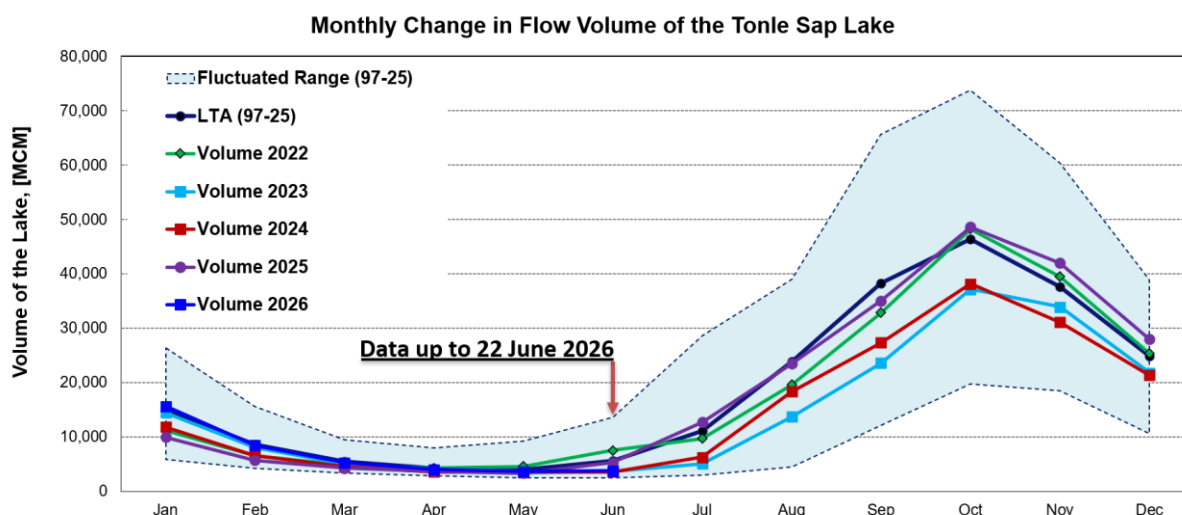


Figure 9. The seasonal change in monthly flow volume of Tonle Sap Lake.

Table 1. The monthly change in the flow volume of Tonle Sap Lake.

Month	LTA (97-25) [MCM]	Max Volume [MCM]	Min Volume [MCM]	Volume 2020 [MCM]	Volume 2021 [MCM]	Volume 2022 [MCM]	Volume 2023 [MCM]	Volume 2024 [MCM]	Volume 2025 [MCM]	Volume 2026 [MCM]	Volume in 2026 [%], compared with its LTA
Jan	15016.17	26357.53	5906.80	5906.80	9923.80	11214.32	14422.11	11824.86	9927.00	15639.19	104.15
Feb	8543.47	15596.22	4198.60	4264.19	5832.97	6558.79	8069.29	6505.88	5690.52	8447.12	98.87
Mar	5522.42	9438.24	3347.07	3553.99	4264.88	4736.52	5080.64	4488.23	4256.33	5252.98	95.12
Apr	4279.51	8009.14	2866.91	2992.61	3556.68	4288.31	3884.16	3569.01	3697.92	4000.18	93.47
May	3985.91	9176.93	2417.81	2594.92	3240.78	4556.83	3438.66	3517.79	3322.45	3607.70	90.51
Jun	5612.10	13635.01	2468.70	2641.88	3798.29	7489.04	3689.97	3586.07	5278.20	3741.66	66.67
Jul	11070.72	28599.56	2925.86	2925.86	5346.73	9703.79	5062.21	6247.29	12706.40		
Aug	23851.22	39015.12	4433.46	5941.07	10547.80	19554.70	13694.57	18304.81	23464.06		
Sep	38261.48	65632.35	12105.31	12105.31	16382.34	32860.34	23550.60	27310.26	35010.86		
Oct	46341.38	73757.23	19705.50	20799.13	27318.21	48199.12	37141.40	38139.87	48583.60		
Nov	37653.83	60367.33	18534.61	27546.80	28982.93	39452.53	33929.52	31056.48	41943.59		
Dec	24911.64	38888.95	10563.49	18251.65	20170.76	25346.65	21757.70	21328.51	27941.36		
	Critical situation: lower than long-term minimum values (LTMIN)										
	Normal condition: within the range of long-term average (LTA) and max (LTMAX) values										
	Low volume situation: lower than long-term average (LTA)										
Unit: Million Cubic Meter (1 MCM= 0.001 Km ³)											

Remarks: the volume of Tonle Sap Lake in 2026 is updated until 22 June 2026.

4. Flash Flood in the Lower Mekong Basin

During the weekly monitoring period from 16 - 22 June, the LMB received light to moderate rain and thunderstorms in some areas.

According to the Southeast Asian Flash Flood Guidance System (SEAFFGS) and analysis, flash flood guidance was detected at low to moderate level in the next 1, 3 and 6 hours in some areas in Cambodia and Lao PDR during the reporting period as shown in **Figure 10 & Table 2**.

Table 2. Detected flash flood in the LMB on 17 June 2026

FLASH FLOOD GUIDANCE IN CAMBODIA								
In the next 1hrs			In the next 3hrs			In the next 6hrs		
Provinces	Districts	Level	Provinces	Districts	Level	Provinces	Districts	Level
Mondul Kiri	Pechr Chenda	Moderate	Ratana Kiri	Koun Mom	Moderate	Ratana Kiri	Koun Mom	Moderate
Ratana Kiri	Koun Mom	Moderate	Ratana Kiri	Ta Veang	Moderate	Ratana Kiri	Ta Veang	Moderate
Ratana Kiri	Ta Veang	Moderate						
FLASH FLOOD GUIDANCE IN LAO PDR								
In the next 1hrs			In the next 3hrs			In the next 6hrs		
Provinces	Districts	Level	Provinces	Districts	Level	Provinces	Districts	Level
Khammuane	Thakhek	Moderate	Khammuane	Thakhek	Moderate	Khammuane	Thakhek	Moderate

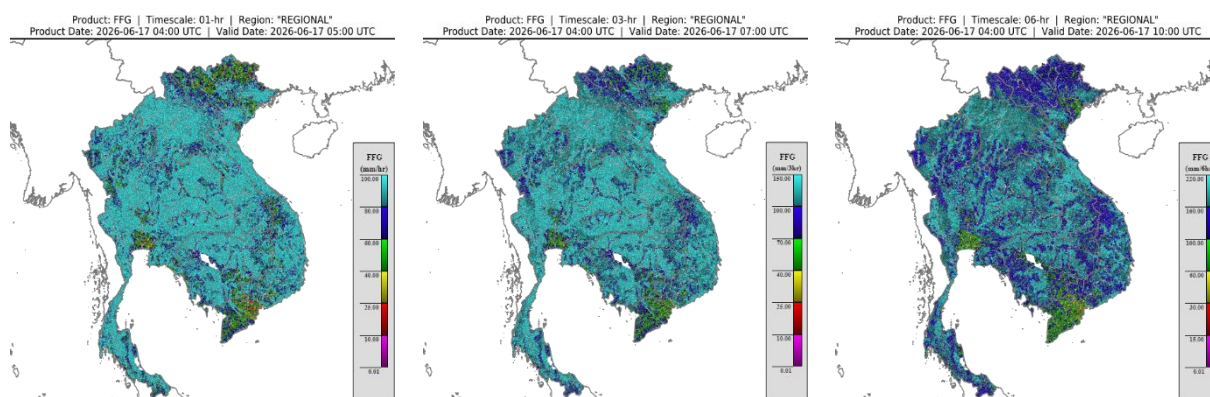


Figure 10. Flash Flood Guidance for the next 1-hr, 3-hr and 6-hr on 17 June

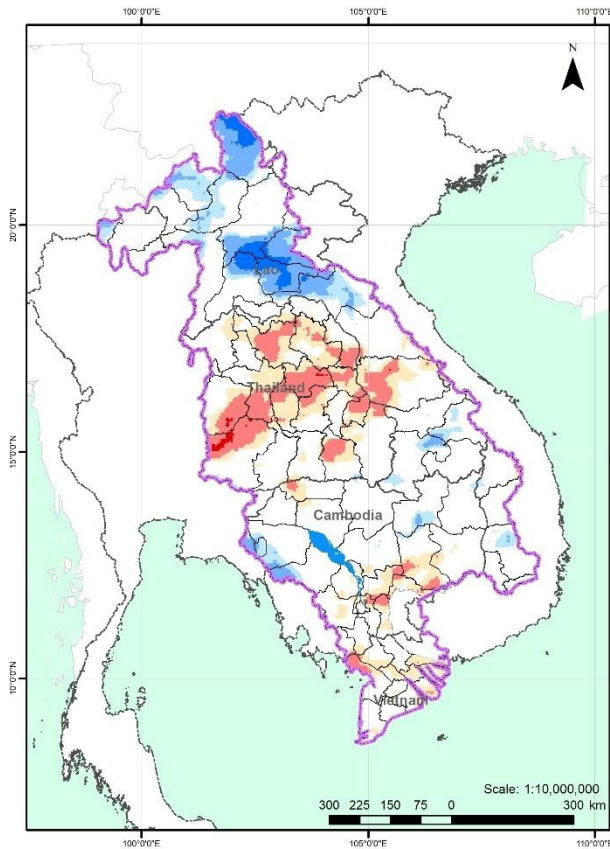
5. Drought Monitoring in the Lower Mekong Basin

5.2. Weekly drought monitoring from 16 - 22 June 2026

Drought monitoring data for 2026 are available from Monday to Sunday every week; thus, the reporting period is normally delayed by one day compared to Flood and Flash Flood reports. We adopt the Index of Soil Water Fraction (ISWF) data obtained from FFGS to represent soil moisture of agricultural indicator for both dry and wet seasons.

- **Weekly Standardised Precipitation Index (SPI1)**

Meteorological indicator shows that from 16 - 22 June, as shown in Figure 9, the LMB was experiencing normal to moderate wet conditions over the region, expect some areas in the northeastern part of Thailand, and the lower part of Cambodia.



Drought Monitoring and Forecasting for the Lower Mekong Basin

Updated on: 22-06-2026

Intensity (mm):



The drought monitor focus on broad-scale conditions. Local conditions may vary. See accompanying text summary for forecast statements.



Disclaimer: This drought monitoring and forecasting map is calculated based on the satellite imageries with no ground verification. MRC does not guarantee the values and accuracy of the products nor be responsible for any risks of using the products.

Figure 11: Weekly standardized precipitation index from 16 - 22 June

- **Weekly Index of Soil Water Fraction (ISWF)**

No drought over the LMB by the Index of Soil Water Fraction, as displayed in **Figure 10**, during the monitoring week from 16 – 22 June, the LMB was experiencing normal conditions, except some areas in the northeastern part of Thailand, the central part of Lao PDR, and the lower part of Cambodia.

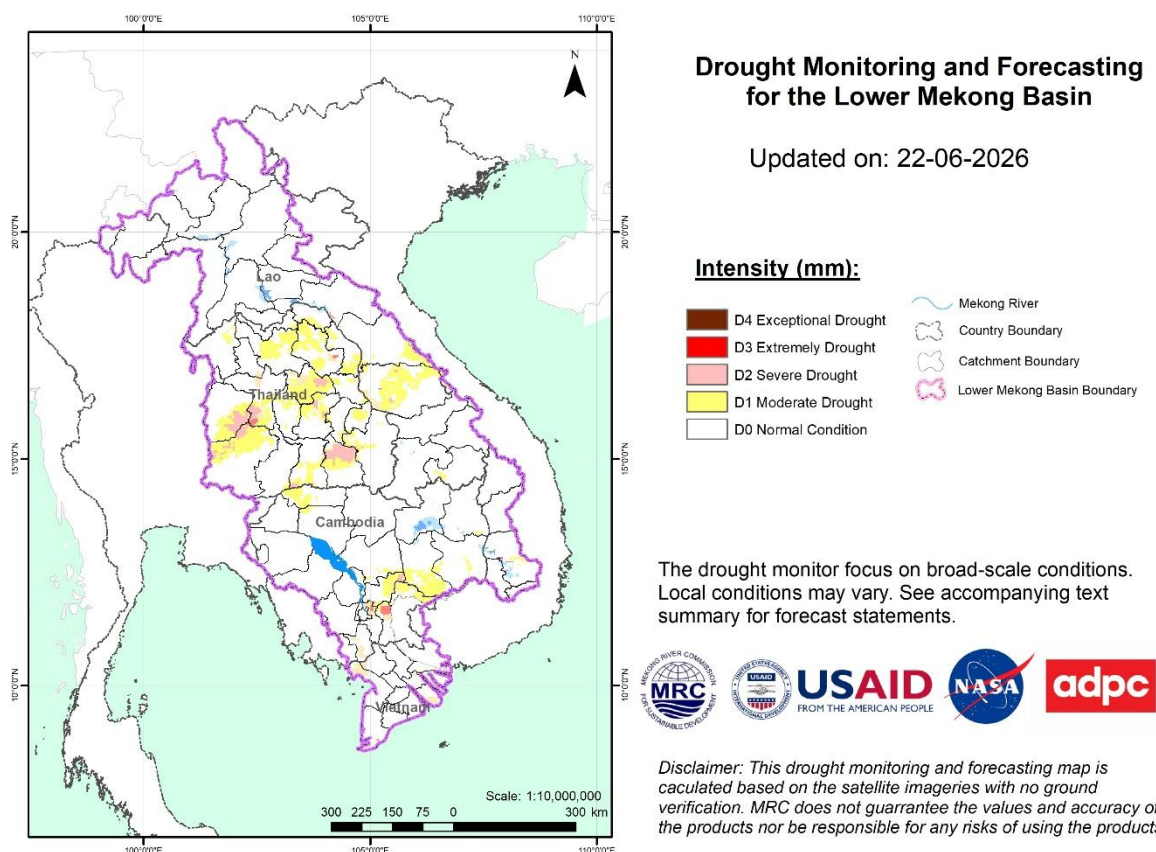


Figure 13: Weekly Combined Drought Index from 16 - 22 June

More information on Drought Forecasting and Early Warning (DFEW) as well as the explanation is available here: <http://droughtforecast.mrcmekong.org/templates/view/our-product>. DFEW provides not only weekly monitoring and forecasting information but also a three-month forecast of drought indicators with seasonal outlook which are updated every month based on international weather forecast models. Details on drought forecast are described in section 6.4 of this report.

6 Weather and Water Level Forecast and Flash Flood information

6.1 Rainfall forecast

During 23 – 27 June, the accumulated rainfall over the entire Lower Mekong Basin is distributed with light to moderate rainfall is forecast in some areas in the LMB, with localized heavy rainfall events anticipated in some areas, especially in the northern and central part of Lao PDR, and the 3S Basin based on CHIRPS-GFS (**Figure 12**).

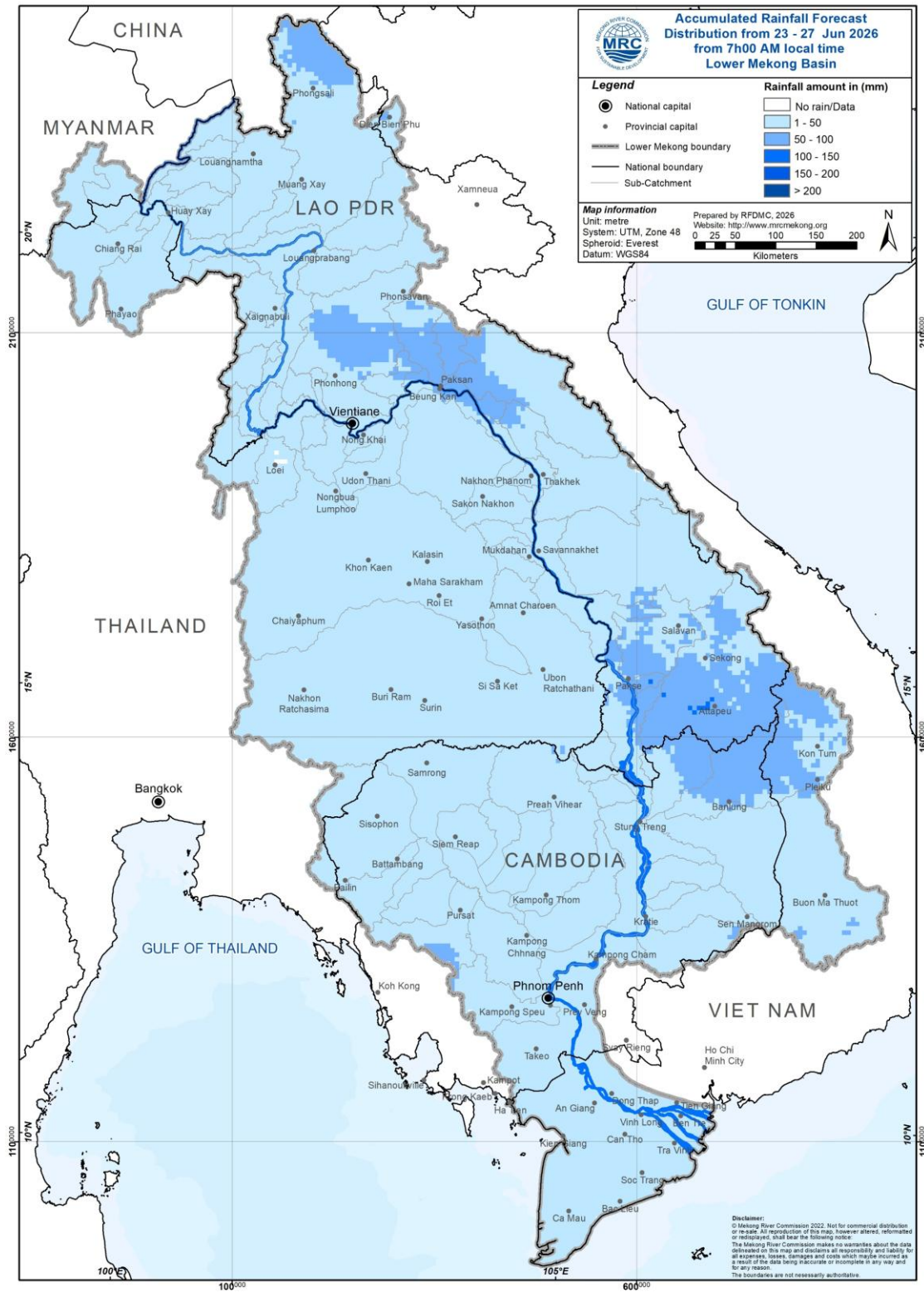


Figure 14: Accumulated rainfall forecast from CHIRPS-GFS (23 – 27 June 2026)

6.2 Water level forecast

During the wet season, from June 1st to October 31st each year, daily riverine flood forecasts are conducted for 22 stations along the Mekong mainstream, with a forecast lead time of five days. This report will describe the forecast water level for a period of **23 – 27 June 2026**. Water levels at almost stations along the Mekong mainstream are expected to drop except for Chiang, and Luang Prabang stations. Water levels at Tan Chau and Chau Doc are expected to be fluctuated due to tidal fluctuations.


At Chiang Saen and Luang Prabang station, water levels are expected to rise approximately 1.33 m, and 0.24 m, respectively. However, at Vientiane, Nongkhai, Nakhon Phanom, Thakhek, Mukdahan, Savannakhet, Khong Chiam and Pakse, the water level is expected to drop approximately -0.11 m, -0.10 m, -0.10 m, -0.34 m, -0.07 m, -0.13 m, -0.398 m, -0.42 m, -0.54 m, and -0.54 m, respectively.

At Stung Treng, Kratie, Kampong Cham, Neak Luong and Prek kdam stations, the water levels are also expected to decrease approximately -0.32 m, -0.52 m, -0.36 m, -0.13 m, and -0.05 m, respectively. However, at Chiang Khan, Phnom Penh (Bassac), Phnom Penh Port, and Koh Khel, the water levels are expected to remain stable.

For the Tan Chau station on the Mekong River and Chau Doc station on the Bassac River, water levels will be fluctuating approximately ranging between -0.07 m & -0.10 m and -0.04 m & -0.23 m, respectively, following daily tidal effects from the sea.

The weekly River Monitoring Bulletin and forecasting issued on **22 June 2026** can be found in **Table 2**. Results of the weekly river monitoring and forecasting bulletin are also available at <http://ffw.mrcmekong.org/bulletin.php>

Table 3. River Monitoring and Forecasting Bulletin.

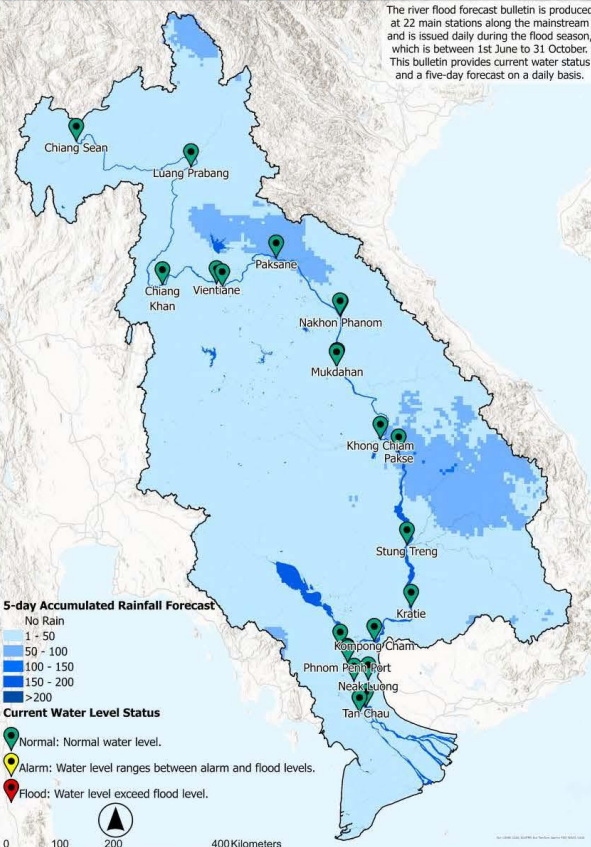


MEKONG RIVER MONITORING AND FORECASTING BULLETIN

Monitoring on 22 June 2026, 7:00 (UTC+7)

Highlights: The water levels at **all stations** along the Mekong mainstream are in **normal conditions**. The total accumulated reversed flow volume into Tonle Sap Lake (TSL) is still **00.00 Km³**.

THE FORECASTING HYDROLOGICAL STATION MAP OF THE LOWER MEKONG BASIN (LMB)



The river flood forecast bulletin is produced at 22 main stations along the mainstream and is issued daily during the flood season, which is between 1st June to 31 October. This bulletin provides current water status and a five-day forecast on a daily basis.

5-day Accumulated Rainfall Forecast
 No Rain
 1 - 50
 50 - 100
 100 - 150
 150 - 200
 >200

Current Water Level Status
● Normal: Normal water level.
● Alarm: Water level ranges between alarm and flood levels.
● Flood: Water level exceed flood level.

Remarks: The river flood forecast bulletin is produced at 22 main stations along the mainstream and is issued daily during the flood season, which runs from 1st June to 31st October. This bulletin provides information on the current water level status and a five-day forecast on a daily basis.

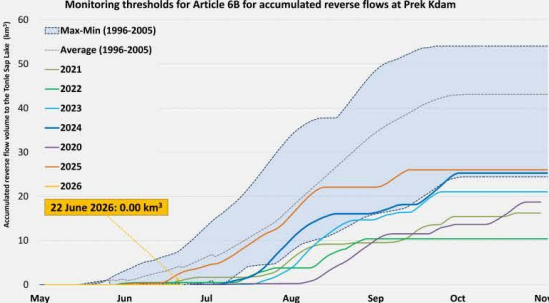
CURRENT WATER LEVEL STATUS

Monitoring Station	Water Level	Flow Threshold (PMFM*6C)
▶ Jinghong	-	-
▶ Chiang Saen	Normal	-
▶ Luang Prabang**	Normal	-
▶ Chiang Khan	Normal	-
▶ Vientiane	Normal	-
▶ Nongkhai	Normal	-
▶ Paksane	Normal	-
▶ Nakhon Phanom	Normal	-
▶ Thakhek	Normal	-
▶ Mukdahan	Normal	-
▶ Savannakhet	Normal	-
▶ Khong Chiam	Normal	-
▶ Pakse	Normal	-
▶ Stung Treng	Normal	-
▶ Kratie	Normal	-
▶ Kompong Cham	Normal	-
▶ Phnom Penh (Bassac)	Normal	-
▶ Phnom Penh Port	Normal	-
▶ Koh Khel	Normal	-
▶ Neak Luong	Normal	-
▶ Prek Kdam	Normal	-
▶ Tan Chau	Normal	-
▶ Chau Doc	Normal	-

* Procedures for Maintenance of Flows on the Mainstream (from 1st July to 31st October)
 ** Luang Prabang station is influenced by hydropowers at its upstream and downstream

REVERSE FLOW VOLUME PREK K DAM (PMFM*6B)

Monitoring thresholds for Article 6B for accumulated reverse flows at Prek Kdam



Accumulated reverse flow volume at Prek Kdam

Flow volumes on 22 June 2026: **00.00 Km³**

Minimum reverse flow volume (1996-2005):	23.848 Km ³
Average reverse flow volume (1996-2005):	42.84 Km ³
Maximum reverse flow volume (1996-2005):	54.046 Km ³

*Procedures for Maintenance of Flows on the Mainstream

MRC Secretariat, Vientiane, Lao PDR | E: mrcs@mrcmekong.org | T: +856 21 263 263

MRC Regional Flood and Drought Management Centre, Phnom Penh, Cambodia | E: floodforecast@mrcmekong.org | T: +855 23 425 353

<http://www.mrcmekong.org/>
http://fwm.mrcmekong.org/bulletin_wet.php
<http://fwm.mrcmekong.org/reportflood.php>
<https://pmfm.mrcmekong.org/>

DISCLAIMER
 This information is supplied as a service to the governments of the MRC Member Countries so that it may be used as a tool within existing national disaster forecast and warning systems.

Forecasting from 23 to 27 June 2026

Highlights: Light to moderate rainfall are likely to occur in several parts of LMB. Water levels at almost stations are expected to drop except for Chiang Saen & Luang Prabang stations, which are affected by tidal fluctuations.

Forecasting Station	24 h Observed Rainfall (mm)	Zero gauge above M.S.L (m)	Observed Water Level against zero gauge (m)		Forecasted Water Level (m)					Alarm Level (m)	Flood Level (m)	Low-lying flood level (m)*	Forecasted Water Levels Change in 5 days (m)	Max. Water levels change within next 5 days (m)	Min. distance to alarm level within next 5 days (m)	Min. distance to flood level within next 5 days (m)	
			21-Jun	22-Jun	23-Jun	24-Jun	25-Jun	26-Jun	27-Jun								
Jinghong	0.0	-	536.26	↑ 536.73	-	-	-	-	-	-	-	-	-	-	-	-	-
Chiang Saen	15.9	357.110	3.42	↓ 3.05	→ 2.95	↑ 3.21	↑ 3.62	↑ 4.03	↑ 4.38	11.50	12.80	-	↑ 1.33	1.33	7.12	8.42	
Luang Prabang	0.0	267.195	9.45	↑ 9.75	→ 9.83	↓ 9.56	→ 9.46	↑ 9.65	↑ 9.99	17.50	18.00	-	↑ 0.24	0.24	7.51	8.01	
Chiang Khan	0.0	194.118	6.68	↓ 6.32	→ 6.31	↑ 6.71	→ 6.65	↓ 6.31	→ 6.32	14.50	16.00	-	→ 0.00	0.39	7.79	9.29	
Vientiane	5.2	158.040	4.90	↓ 4.58	↓ 4.39	↑ 4.53	↑ 4.82	↓ 4.69	↓ 4.47	11.50	12.50	-	↓ -0.11	-0.19	6.68	7.68	
Nongkhai	1.0	153.648	3.88	↓ 3.52	↓ 3.28	→ 3.35	↑ 3.74	→ 3.69	↓ 3.42	11.40	12.20	7.35	↓ -0.10	-0.24	7.66	8.46	
Paksane	0.0	142.125	5.50	↓ 5.12	↓ 4.72	↓ 4.45	→ 4.54	↑ 4.89	↓ 4.78	13.50	14.50	-	↓ -0.34	-0.67	8.61	9.61	
Nakhon Phanom	8.9	130.961	4.17	↓ 4.16	→ 4.10	↓ 3.96	→ 3.88	↑ 3.98	↑ 4.09	11.50	12.00	9.04	→ -0.07	-0.28	7.40	7.90	
Thakhek	7.8	129.629	5.45	↓ 5.43	→ 5.35	↓ 5.18	→ 5.08	→ 5.18	↑ 5.30	13.00	14.00	-	↓ -0.13	-0.35	7.66	8.66	
Mukdahan	0.0	124.219	4.24	↓ 4.22	↓ 4.03	↑ 3.83	→ 3.68	→ 3.68	↑ 3.83	12.00	12.50	-	↓ -0.39	-0.54	7.97	8.47	
Savannakhet	0.0	124.219	2.68	↓ 2.62	↓ 2.42	↓ 2.20	→ 2.04	→ 2.05	↑ 2.20	12.00	13.00	-	↓ -0.42	-0.58	9.58	10.58	
Khong Chiam	0.0	89.030	4.69	↓ 4.61	→ 4.57	↓ 4.39	↓ 4.18	↓ 4.05	→ 4.07	13.50	14.50	-	↓ -0.54	-0.56	8.93	9.93	
Pakse	nr	86.490	3.36	↓ 3.30	↓ 3.24	↓ 3.09	→ 2.90	→ 2.76	→ 2.76	11.00	12.00	-	↓ -0.54	-0.54	7.76	8.76	
Stung Treng	0.0	36.790	3.95	↓ 3.90	→ 3.89	↓ 3.84	↓ 3.75	↓ 3.65	↓ 3.58	10.70	12.00	-	↓ -0.32	-0.32	6.81	8.11	
Kratie	0.0	-1.080	9.90	↑ 9.84	↓ 9.67	→ 9.65	↓ 9.59	↓ 9.46	↓ 9.32	22.00	23.00	-	↓ -0.52	-0.52	12.33	13.33	
Kompong Cham	0.0	-0.930	4.36	→ 4.38	↓ 4.33	↓ 4.25	↓ 4.20	↓ 4.13	↓ 4.02	15.20	16.20	-	↓ -0.36	-0.36	10.87	11.87	
Phnom Penh (Bassac)	0.0	-1.020	2.41	↓ 2.36	↑ 2.49	↓ 2.43	→ 2.41	→ 2.39	↓ 2.35	10.50	12.00	-	→ -0.01	-0.01	8.01	9.51	
Phnom Penh Port	nr	0.070	1.40	↓ 1.35	↑ 1.48	↓ 1.42	→ 1.40	→ 1.38	↓ 1.34	9.50	11.00	-	→ -0.01	-0.01	8.02	9.52	
Koh Kheh	0.0	-1.000	2.15	↑ 2.18	↑ 2.23	→ 2.24	→ 2.23	→ 2.22	→ 2.20	7.90	8.40	-	→ 0.02	0.02	5.66	6.16	
Neak Luong	0.0	-0.330	1.60	↓ 1.58	↑ 1.55	→ 1.53	↓ 1.49	→ 1.47	→ 1.45	7.50	8.00	-	↓ -0.13	-0.03	5.95	6.45	
Prek Kdam	0.0	0.080	1.45	↑ 1.63	→ 1.65	→ 1.63	→ 1.62	→ 1.61	↑ 1.58	9.50	10.00	-	↓ -0.05	-0.05	7.85	8.35	
Tan Chau	nr	0.000	-0.07	→ -0.07	↑ -0.03	↑ -0.06	→ -0.06	↑ -0.09	→ -0.10	3.50	4.50	-	↑ -0.03	0.04	3.53	4.53	
Chau Doc	nr	0.000	-0.05	→ -0.04	↓ -0.09	↓ -0.17	↓ -0.23	→ -0.21	→ -0.23	3.00	4.00	-	↓ -0.19	-0.05	3.09	4.09	

*: Low-lying flood levels have been requested by Thailand to be included for specific stations including Nongkhai (7.35 m), Nakhon Phanom (9.04 m) and Beung Kan (7.58 m) stations

WATER LEVEL FORECASTING DEFINITIONS

↑	Rising water level.
→	Stable water level: stable water level is defined as a daily change of less than 10cm from Chaing Saen to Savannakhet; less than 5cm at Pakse and Stung Treng; and no more than 3cm from Kratie downstream.
↓	Falling water level.
X	No data available.
Alarm stage	Alarm stage is when the water level ranges between alarm and flood levels.
Flood stage	Flood stage is when the flood level exceeds. A flood level is determined by member countries.

NOTES

- On 22 June, water levels at all stations along the Mekong mainstream are in normal conditions. The total accumulated reverse flow to TSL is 00.00 Km³.
- In the next 5 days, light to moderate rainfall is forecast in some areas in the LMB, with localized heavy rainfall events anticipated in some areas, especially in northeastern part of Thailand, the northern and central part of Lao PDR.
- For 23 – 27 June, water levels at almost stations are expected to drop except for Chiang Saen & Luang Brabang stations. No stations are expected to reach either alarm or flood levels.

Next week, from 23 - 29 June, light to moderate rainfall is forecast in some areas in the LMB, with localized heavy rainfall events anticipated in some areas, especially in the northern and central part of Lao PDR, and the 3S Basin.

7.2. Water level and its forecast

At 22 key monitoring stations along the Mekong mainstream from 16 – 22 June 2026, water levels at all stations along the Mekong mainstream are in normal conditions. The total accumulated reverse flow to TSL is 00.00 Km³. However, the 6 monitoring stations remain in normal condition with respect to the flow threshold (PMFM Thresholds). It is also the same condition for Tan Chau and Chau Doc monitoring stations, which are significantly influenced by sea tidal fluctuation.

In the period of 23 – 27 June 2026, water levels at almost stations along the Mekong mainstream are expected to drop except for Chiang, Luang Prabang stations, Chiang Khan, and those from Phnom Penh (Bassac) to Koh Khel. Water levels at Tan Chau and Chau Doc are expected to be fluctuated due to tidal fluctuations.

7.3. Flash flood and its trends

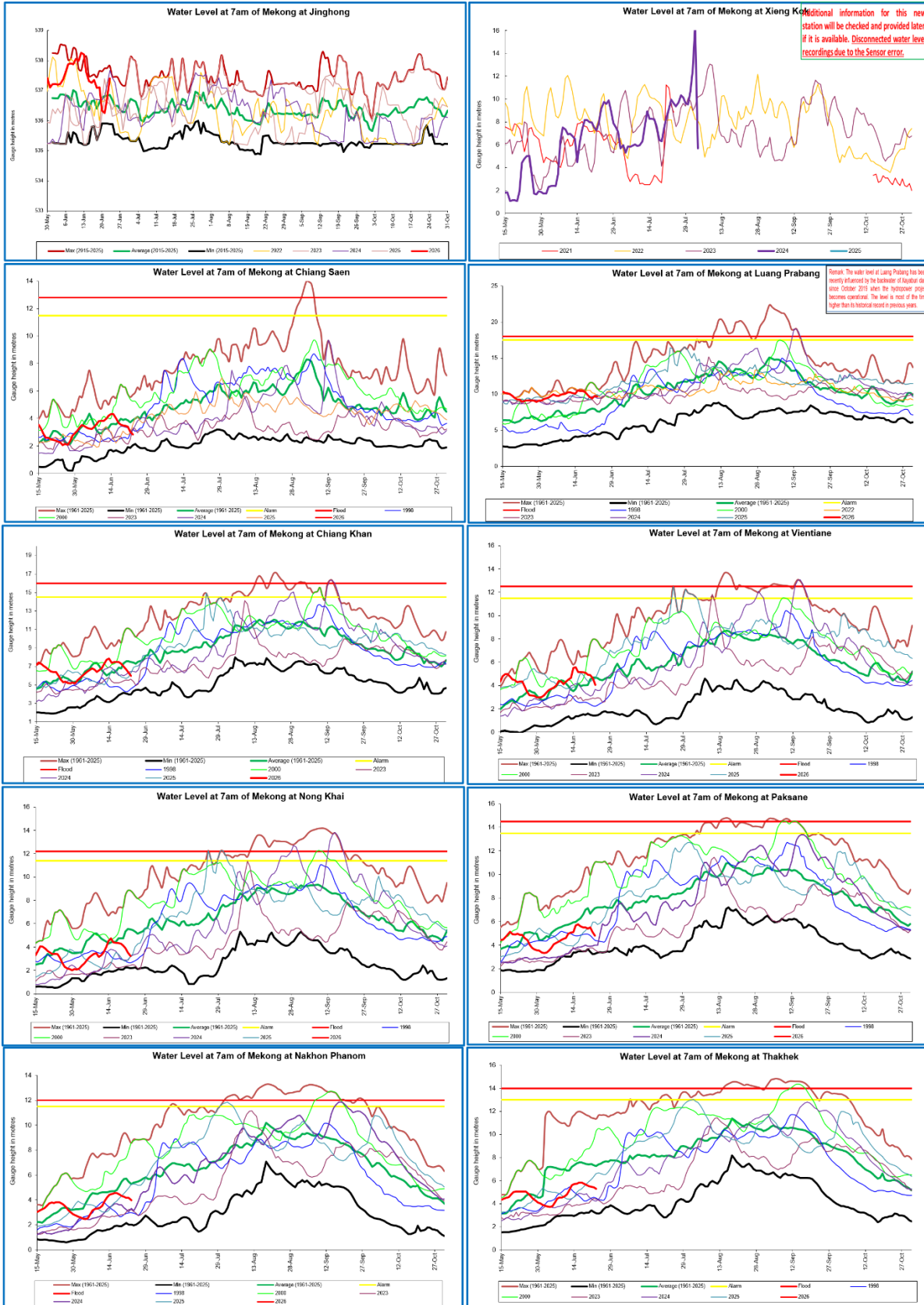
With the predicted of rainfall for the coming week as mentioned earlier in part 2, the flash flood guidance from low to high level will likely be detected in some areas of the LMB.

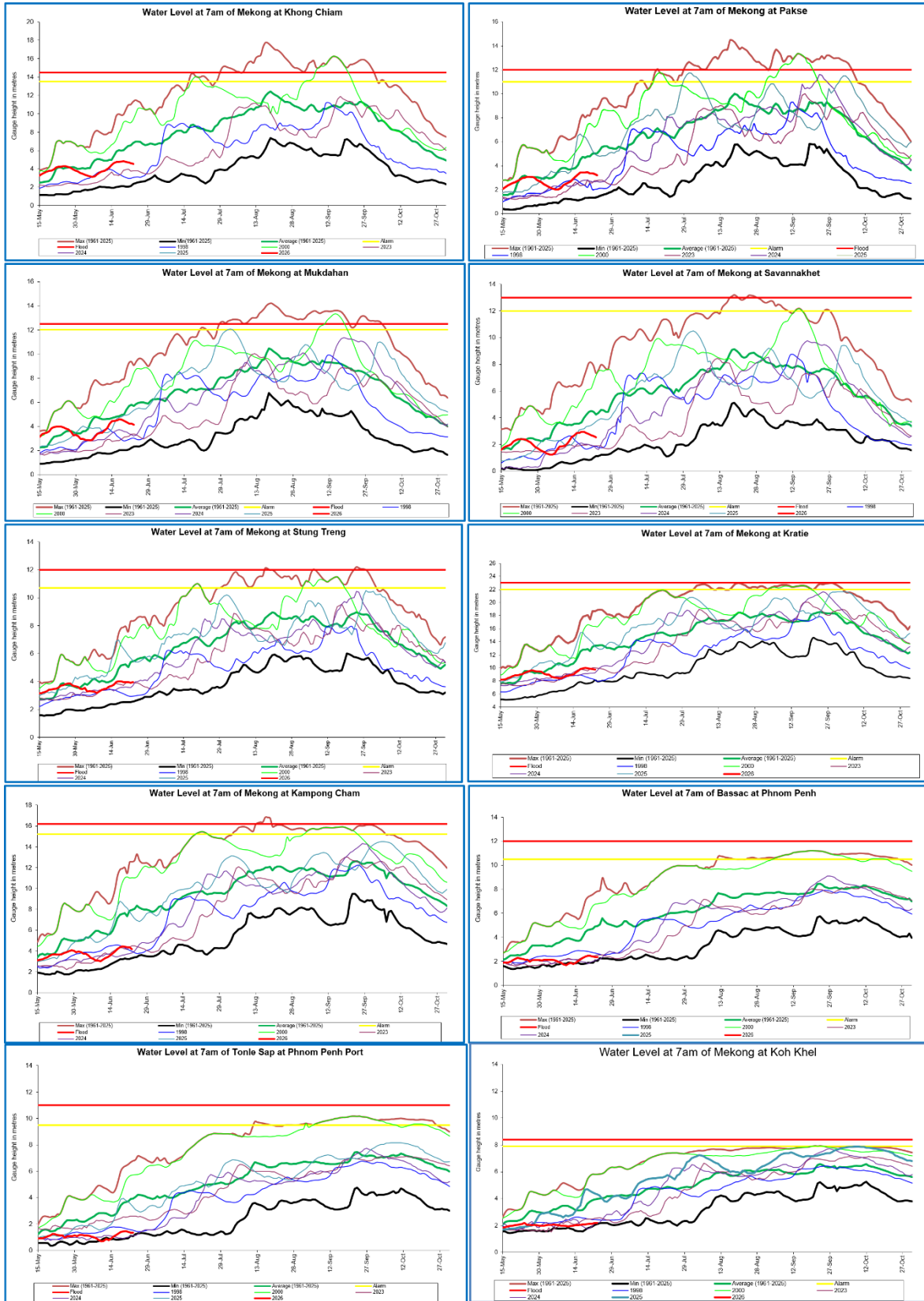
7.4. Drought condition and its forecast

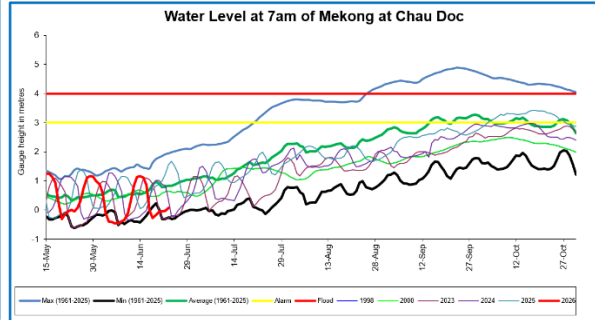
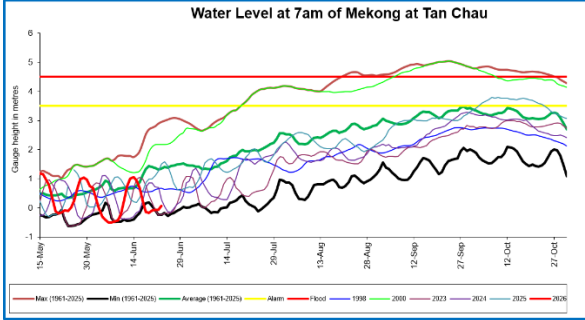
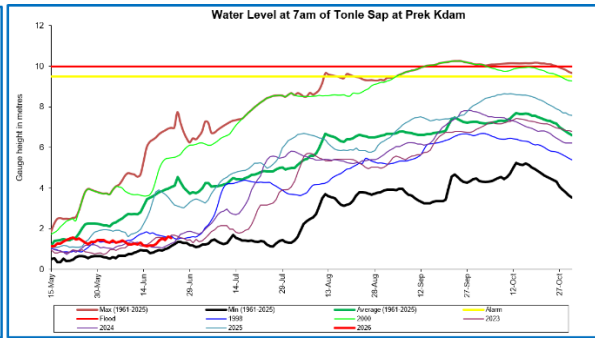
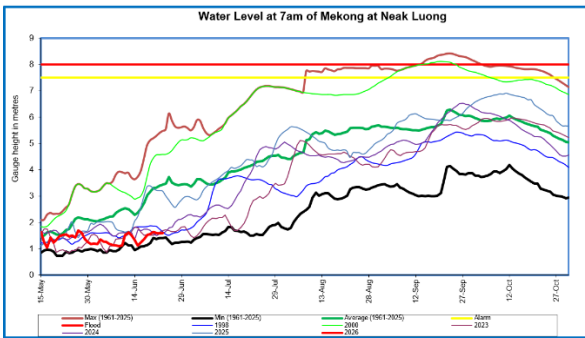
From 16 - 22 June, according to the Combined Drought Indicator (CDI), no significant drought conditions were observed across the majority of the Lower Mekong Basin (LMB). However, localized drought conditions persisted in some areas in the northeastern part of Thailand, and lower part of Cambodia.

The weekly forecast from 23 - 29 June 2026 indicates that no drought conditions are expected across the Lower Mekong Basin (LMB), except some areas in the northeastern part of Thailand and Cambodia during the coming week based on the Combined Drought Index.

Annex A: Weekly water level monitoring at 22 key stations







Annex B: Tables for weekly updated water levels and rainfall at the Key Stations

Table A1: Weekly observed water levels

2025	Jinghong	Chiang Saen	Luang Prabang	Chiang Khan	Vientiane	Nongkhai	Paksane	Nakhon Phanom	Thakhek	Mukdahan	Savannakhet	Khong Chiam	Pakse	Stung Treng	Kratie	Kompong Cham	Phnom Penh (Bassac)	Phnom Penh Port	Koh Khel	Neak Luong	Prek Kdam	Tan Chau	Chau Doc
16-06-2026	537.26	4.02	10.48	7.45	5.16	4.4	5.77	4.55	5.83	4.48	2.85	4.74	3.42	3.96	9.52	3.94	2.18	1.17	2.05	1.24	1.18	0.68	0.85
17-06-2026	537.35	3.69	10.44	7.45	5.18	4.36	5.63	4.55	5.83	4.58	2.94	4.74	3.44	4.01	9.82	4.18	2.30	1.29	2.07	1.36	1.18	0.24	-0.02
18-06-2026	537.09	3.55	10.28	7.48	5.12	4.32	5.50	4.45	5.73	4.55	2.94	4.8	3.44	4.03	9.95	4.38	2.40	1.39	2.09	1.52	1.25	-0.14	-0.28
19-06-2026	537.10	3.49	9.90	7.29	5.09	4.3	5.53	4.33	5.61	4.45	2.85	4.82	3.46	3.97	9.99	4.44	2.45	1.44	2.11	1.56	1.43	-0.18	-0.17
20-06-2026	536.33	3.47	9.57	7.01	4.93	4.14	5.42	4.25	5.53	4.37	2.77	4.75	3.38	3.96	9.93	4.4	2.46	1.45	2.13	1.64	1.53	-0.08	-0.06
21-06-2026	536.26	3.42	9.45	6.68	4.90	3.88	5.50	4.17	5.45	4.24	2.68	4.69	3.36	3.95	9.9	4.36	2.41	1.40	2.15	1.60	1.45	-0.07	-0.05
22-06-2026	536.73	3.05	9.75	6.32	4.58	3.52	5.12	4.16	5.43	4.22	2.62	4.61	3.30	3.9	9.84	4.38	2.36	1.35	2.18	1.58	1.63	-0.07	-0.04
Flood level		12.80	18.00	16.00	12.50	12.00	14.50	12.50	14.00	12.50	13.00	14.50	12.00	12.00	23.00	16.20	12.00	11.00	7.90	8.00	10.00	4.50	4.00

Table A2: Weekly observed rainfall

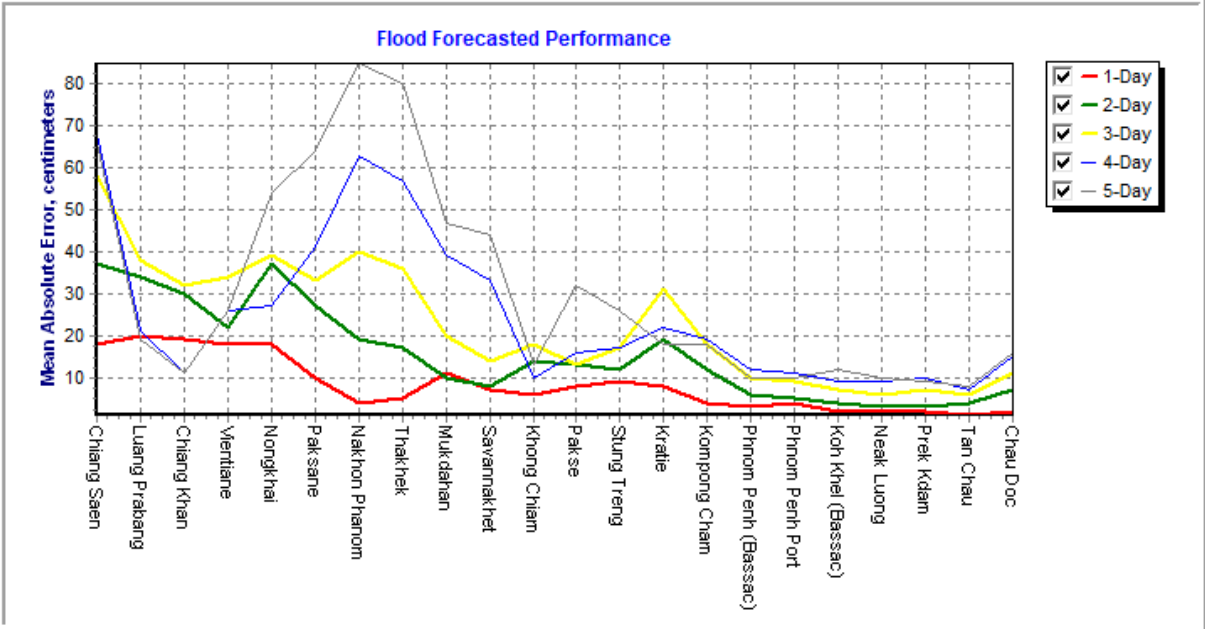
2025	Jinghong	Chiang Saen	Luang Prabang	Chiang Khan	Vientiane	Nongkhai	Paksane	Nakhon Phanom	Thakhek	Mukdahan	Savannakhet	Khong Chiam	Pakse	Stung Treng	Kratie	Kompong Cham	Phnom Penh (Bassac)	Phnom Penh Port	Koh Khel	Neak Luong	Prek Kdam	Tan Chau	Chau Doc
16-06-2026	0	0	0	0	0	0	0	22.7	25.3	0	0	0	0	0	20	0	1.5	0.00	0	10.6	25.3	11.6	0.9
17-06-2026	0	0	0	0	1.4	0	6.2	28.2	33.5	0	1.1	0	27.4	8	0	0	0	0.00	0	0	0	0.8	0
18-06-2026	3	0	0	0	0	0.2	1.8	0	0	0	0	0	0	0	0	0	0	0.00	0	0	0	0	5
19-06-2026	0.5	19.6	0	0	0	0	8.2	0	0	0	0	0	4.6	1	0	0	6.8	0.00	6.7	6.2	0	0	6
20-06-2026	0	6.3	0	0	0	0	0.6	0	0	0	0	4.3	0	0	0	0	0	0.00	0	0	0	0	0
21-06-2026	1	0.3	1.2	0	0	0	0.2	2.2	0	0	0	0	0	0	0	14.5	0	0.00	0	0	0	0	0
22-06-2026	0	15.9	0	0	5.2	1	0	8.9	7.8	0	0	0	0	0	0	0	0	0.00	0	0	0	0	0
Sum	4.5	80.8	20.6	20.0	6.6	1.2	17.0	62.0	66.6	0.0	1.1	4.3	32.0	9.0	20.0	14.5	8.3	0.0	6.7	16.8	25.3	12.4	11.9

Annex C: Performance of the weekly flood forecasting

“Accuracy” here refers to the state where data recorded in the MRC’s Mekong River Flood Forecasting System are cleaned and verified.

The adjustment of flood forecasting outcomes from the flood forecasting system requires flood forecasters to have extensive knowledge in hydrology and statistical modelling for estimating the relationships between stations upstream and downstream in the Mekong River Basin. Flood forecasting performance presented in the graph below shows the average flood forecasting accuracy at each key station along the Mekong mainstream from 16 to 22 June 2026.

The forecasting values from 16 to 22 June 2026 show that the overall accuracy is fair for a four-day to five-day forecast in lead time (less than 250 cm) for most of the stations from the upper to the lower parts of the Mekong River with combine information of rainfall and reservoirs' operation in this area during the report period.



Note: The higher percentage of flood forecasting accuracy is due to several key factors as follows:

- Chiang Saen station is influencing by hydropower upstream operation from China.
- Luang Prabang to Chiang Khan and Paksane to Stung Treng to Kratie have been influenced by hydropower operations upstream, tributaries inflows.
- The influence of heavy rainfall caused by storms and hydropower operations from upstream, tributaries inflows and the lower part of the Mekong floodplain, including the 3S (Stung Treng and Kratie).
- Fluctuations of the water levels at Tan Chau and Chau Doc stations were due to daily tidal effects of the sea in the Mekong Delta.
- Satellite rainfall data were not representative of the actual rainfall at ground stations in some areas of the Mekong region.



Mekong River Commission Secretariat

P. O. Box 6101, 184 Fa Ngoum Road, Unit 18 Ban Sithane Neua, Sikhottabong District, Vientiane 01000, Lao PDR
Tel: +856 21 263 263. Fax: +856 21 263 264 www.mrcmekong.org

© Mekong River Commission 2024